

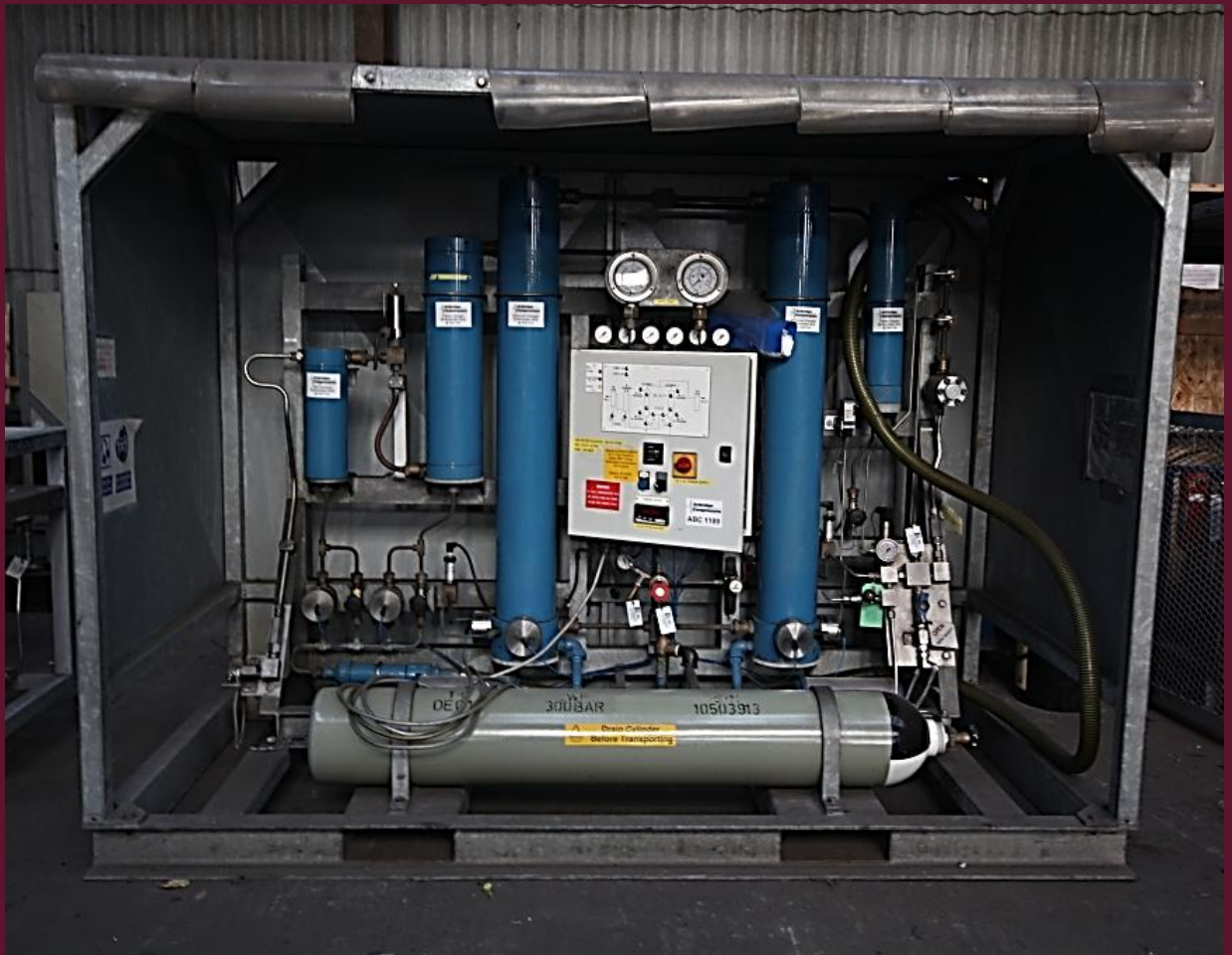


EEL

Bentley BD127-EP380

Description

A high-specification, high-pressure breathing air dryer for applications requiring the highest air purity, commonly used in naval dockyards and meeting the DEF STAN 68-284 air quality standard. These units have a flow rate of 350Nm³/hr when operating at min. 250bar and a maximum pressure of 350bar. In the industrial world they are used for testing and drying large air receivers and pipework installations.





EEL

Bentley BD127-EP380

Key data

| | |
|-----------------------|-------------------------------|
| Make | Bentley |
| Model | BD127-EP380 |
| Atmospheric dew point | -70° C |
| Flow rate | 350Nm ³ /hr |
| Max. pressure | 350 bar |
| Air quality | Def Stan 68-284 |
| Oil content | Less than 0.005ppm |
| Carbon dioxide | Less than 300ppm |
| Carbon monoxide | Less than 10ppm |
| Dust particles | Below 5µm |
| Power | 110V single phase 50/60Hz |
| Air storage | 68L receiver rated to 300 bar |
| Enclosure | Steel crash frame |
| Dimensions | 236 x 116 x 175 cm |
| Weight | 1,134 kg |