

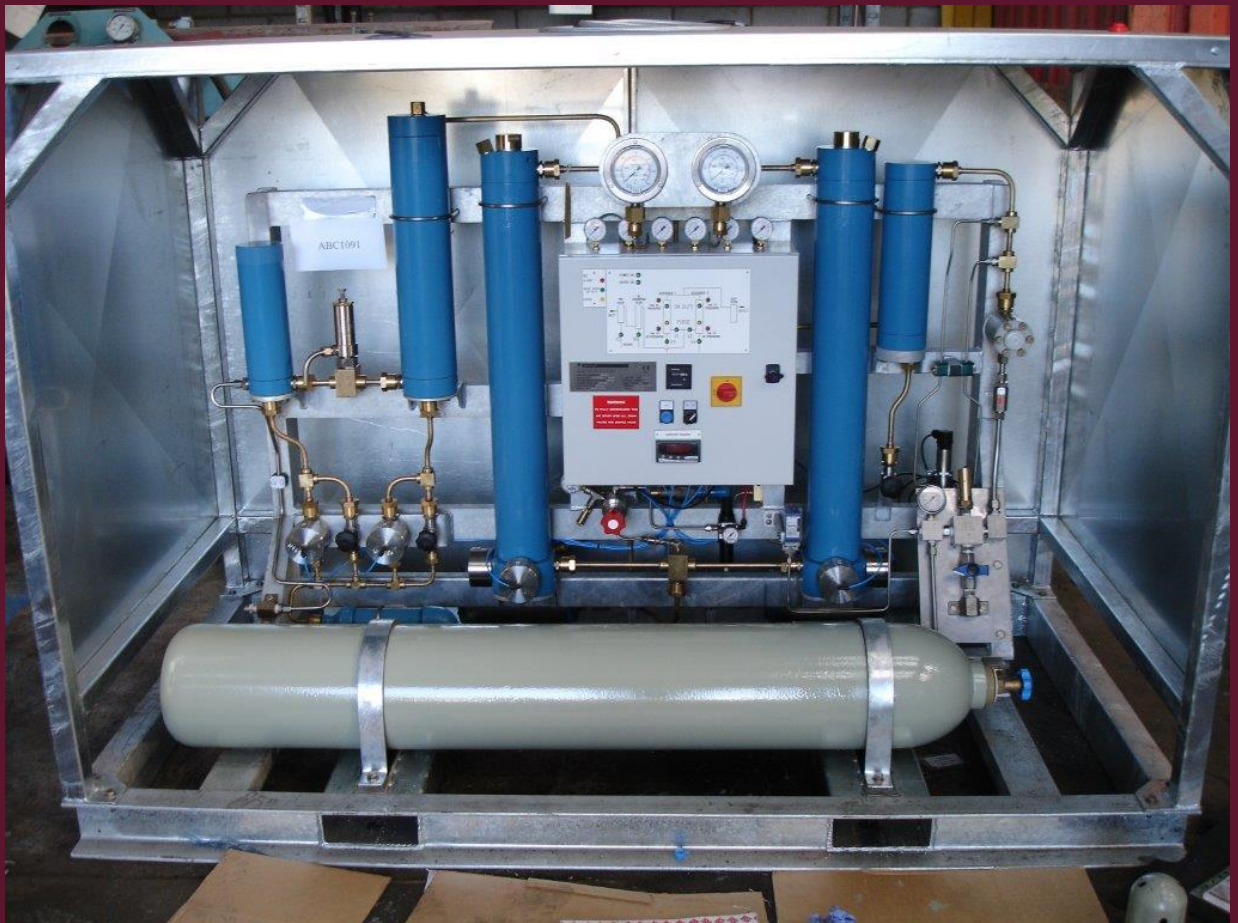


**EEL**

## Bentley BD90-EP380

### Description

A high-specification, high-pressure breathing air dryer for applications requiring the highest air purity, commonly used in naval dockyards and meeting the DEF STAN 68-284 air quality standard. These units have a flow rate of 170Nm<sup>3</sup>/hr when operating at min. 250bar and a maximum pressure of 350bar. In the industrial world they are used for testing and drying large air receivers and pipework installations.



**EEL**

# Bentley BD90-EP380

## Key data

Make	Bentley
Model	BD90-EP380
Atmospheric dew point	-70° C
Flow rate	170Nm <sup>3</sup> /hr
Max. pressure	350 bar
Air quality	Def Stan 68-284
Oil content	Less than 0.005ppm
Carbon dioxide	Less than 300ppm
Carbon monoxide	Less than 10ppm
Dust particles	Below 5µm
Power	110V single phase 50/60Hz
Air storage	68L receiver rated to 300 bar
Enclosure	Steel crash frame
Dimensions	221 x 116 x 160 cm
Weight	910 kg