

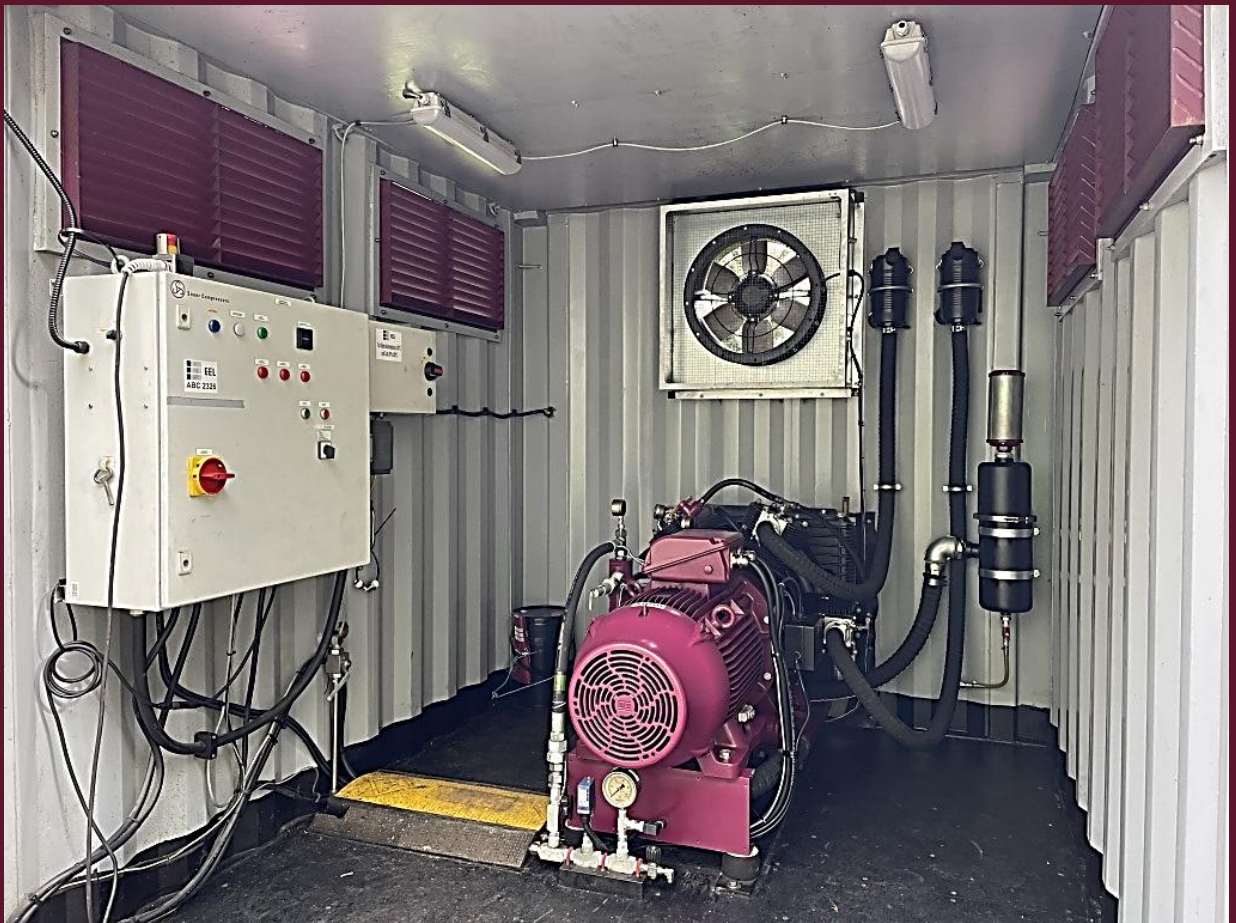


EEL

Sauer WP206L

Description

An air-cooled, electric industrial compressor. These units are typically used in factories for manufacturing and industrial applications.





EEL

Sauer WP206L

Key data

Make	Sauer
Model	WP206L
Flow rate	143m ³ /hr
Max. pressure	80 bar
Prime mover	37kW electric motor
Transmission	Direct drive
Cooling	Air cooled
Control	Fully automatic by pressure switch
Condensate	Timed drainage to a condensate tank
Noise level	90dB at 1m
Enclosure	10ft container
Dimensions	300 x 243 x 258 cm
Weight	Approx. 3,000 kg